



# DS-8007 Transport Monitor Reference Guide

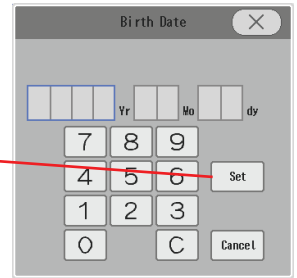
## Admit a Patient

Touch "Admit" to open the monitor.

Touch **Admit/Discharge** found in the **User Key** on the left side of the screen or touch the **Patient tile** in the upper left corner of the screen to enter patient data.

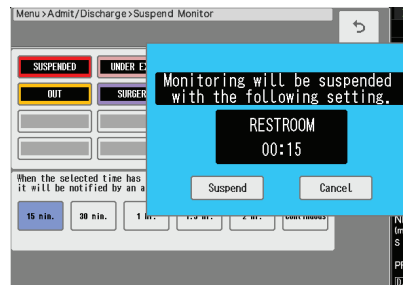
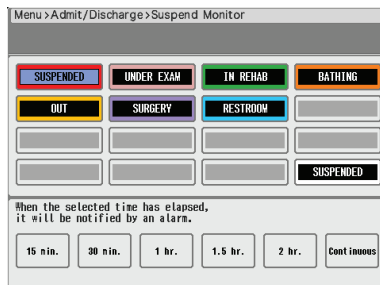


- Enter patient information.
  - \*If nothing else, input the Class (**Pt Type - Adult/Child/Neo**) and the sex of the patient so that the central station will start saving data when on a Hardwired Network.
- Ensure that the **Appropriate Patient Type** is selected (**Adult, Child, and Neonate**).
- **ID** - Input the numeric data for the ID
  - ◆ Touch "Set" found at the bottom right hand corner to enter the information
- **Birth Date** - Input Birth Date (Year, Month, and Day) Touch "Set" to enter the information.
  - \*Warning: The system defaults to a 35 yr old male.
- Turn the **Pacemaker** key to "Used" if the patient has a pacemaker.
  - \*Only activate if the patient has a pacemaker.
- Touch **Mode Select** in the **Admit/Discharge** menu or you may find it as a user key.



## Monitor Suspend

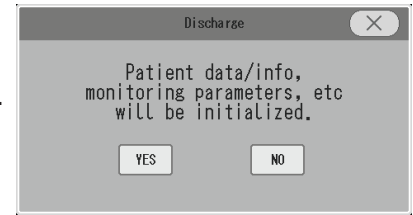
- Touch **Admit/Discharge** → touch **Monitor Suspend** or you may find it as a **User Key**.
- Choose the **Reason** for suspending the monitor and then the **Time Frame**.
- The confirmation menu will be displayed. Touch **Suspend** to place the monitor into a "Suspend Mode".
- The resume monitoring, touch **Resume** or you can choose to **Extend** the time if needed.



## To Discharge A Patient

- Touch **Admit/Discharge**.
  - ◆ Touch **Discharge** and the Discharge confirmation window will be displayed.
  - ◆ Touch **YES**.

**\*Warning: All data will be erased from this monitor upon Discharge!**



## NIBP Options

- **NIBP Intervals**
  - ◆ Touch **NIBP Auto Mode**. This will display all possible NIBP measurement intervals.
- **NIBP List**
  - ◆ Touch **NIBP List**. This will display a chart with the date and time of each **NIBP and all user defined vital signs**. The most recent recording is on the right. Use the arrows on the Right side of the box to scroll.
- **To Print** > Touch the **Print** button on the bottom right corner to print the NIBP List to the optional 3 Channel printer or when hardwired to the Laser Printer.

- **NIBP Smart Features**

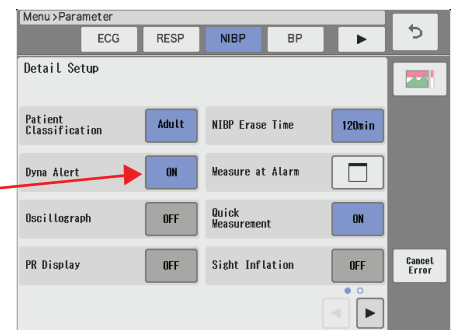
- ◆ **Dyna Alert:** NIBP watch dog. Takes an additional pressure when it measures a 20% change in the HR and SpO2 algorithm.

**Dyna Alert utilizes an ECG waveform, a HR and SpO2 Pulse wave.**

**\*Only available in conjunction with Nellcor SpO2.**

Turn **Off** when monitor is used with **Dialysis**.

- Touch **NIBP Numeric** > Touch **Detail Setup** > Touch the **ON** key next to Dyna Alert and select **OFF**.

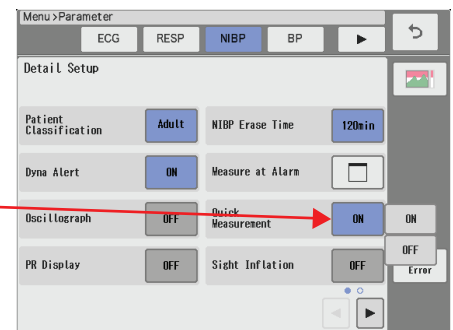


- ◆ **Quick Measure:** provides a NIBP measurement in 20-25 seconds

**\*Note:** For **Hemodynamically unstable Patients**

Turn **OFF Quick Measurement** and turn **ON Sight Inflation**, follow the steps below:

- Touch **NIBP Numeric** > Touch **Detail Setup** > Touch the **ON** key next to Quick Measurement and select **OFF**.



- ◆ **Sight Inflation:** The inflation target level will be automatically determined during the inflation, and starts to deflate after the target level is reached.

**\*Note:** Good for **Hemodynamically Unstable Patients**.

To turn **ON**, follow the steps below.

- Touch **NIBP Numeric** > Touch **Detail Setup** > Touch the **OFF** key next to Sight Inflation and select **ON**.

- **STAT NIBP**

- ◆ Touch the **NIBP Start/Stop** hard key found on the top to initiate a stat NIBP.

## To Silence Alarms

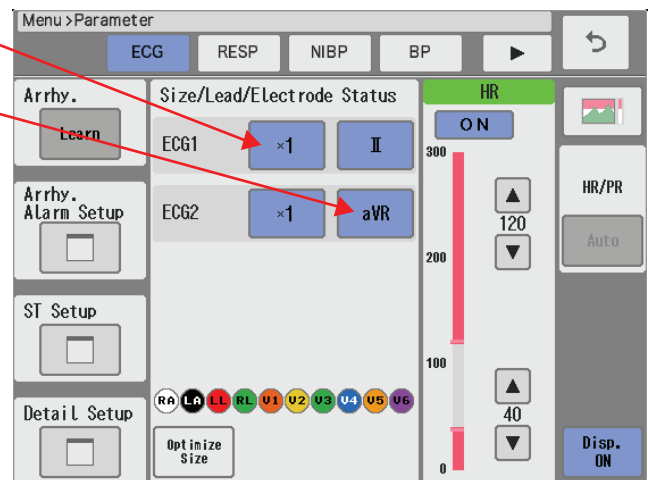
- Touch **Alarm Silence** or the fixed key on the right side of the monitor. If there is a new alarmed event or occurrence, it will alarm again.

## To Print an ECG Strip

- Touch the **Print Start/Stop** Key if you have the Optional 3 Channel Printer. A 2 second strip/continuous strip will print at the bedside. Up to 3 waveforms can be chosen to print.

## To View or Change any Vital Sign Parameters

- Touch **Menu** and choose the parameter you want to make changes to or... Touch the **Vital Sign Numeric box** of the parameter to make changes. A menu specific for that parameter will open.
  - ◆ For example.....Touch **HR**.
    - Touch the **Numbers** on the **Alarm Limits** to change alarm parameters by dragging the column.
    - Touch **Size** to increase/decrease the gain or **Arrhythmia learn** to relearn the patient's baseline
    - To change the **Lead**
      - Touch **ECG X\_\_\_\_\_** to change the gain
      - Touch **ECG Lead** to change the Lead choice

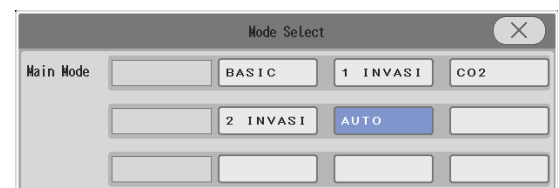


## Interpretative 12 Lead

- Touch the **Mode** key at the top of the monitor. Choose 12 Lead. (You will need to use the 12 lead cable).
  - ◆ Please refer to the **Invasive Lines, EtCO2 and 12 Lead Reference Guide** for further instructions.

## Invasive Lines

- Touch the **Mode** key at the top of the monitor. In the **"Mode Select Menu"** under **"Main Mode"** change the mode to: **AUTO, 1 Invasive or 2 Invasive etc...** The active mode will be highlighted in blue.
  - ◆ Please refer to the **Invasive Lines, EtCO2 and 12 Lead Reference Guide** for further instructions.



## Favorite User Key Options

**Tabular Trend:** This key displays a chart of all user defined patient vital signs.

- Touch **Menu** → **Function** → **Tabular Trend** if not found as a user key.
  - ◆ Select **Interval** to change the frequency of the vital sign display from 10 sec to 60 min & to view the NIBP List. Found in the right-hand column.
  - ◆ To Print - Touch **Print** on the bottom right.

**Graphic Trend:** This section displays user defined graphs and trends of various vital signs and events.

- **Menu** → **Function** → **Graphic Trend** if not found as a user key.

**Recall:** This button will allow you to view the alarmed events on the patient.

- Touch **Recall** > Touch the “**Alarmed Event**” you wish to view and a 4 second strip will be displayed.
  - ◆ To print the alarm, touch **Print** in the bottom right corner.

**Other Bed:** This key displays waveforms, vital signs and events of a second patient on the screen.

- Touch **Other Bed** located next to the patient data at the top of the screen > Select the bed you want to visualize and a picture in picture will appear with the second patient’s data.

**\*Note: This function only works on a hardwired installation.**



**Night Mode:** This will adjust the brightness, turning off the alarm sounds at the bedside while alarms and vital signs remain audible and seen at the Central Station.

- Touch the **Night Mode** User Key. To cancel, touch the lower Quick Key Area.

