

Data-driven Insights for Smarter Clinical Decisions

An advanced alarm analytics platform designed to tackle one of the most pervasive challenges in healthcare: alarm fatigue. Fukuda Insights aims to transform the management of clinical alarms by providing actionable insights and effective tools to significantly reduce unnecessary alarms, thus enhancing patient care and staff efficiency.

Fukuda Insights

A part of the Fukuda Connexus Digital Ecosystem



FUKUDA

Accessible Healthcare for Everyone

Comprehensive Data Analysis

- WebBased Interactive Dashboard: Visualizes high-fidelity alarm data stored in the cloud.
- Data Segmentation: Allows segmentation by time (hours, days, weeks, months), clinical area, alarm type, and severity.

Actionable Insights

- Alarm Insights Manager: Provides actionable insights to understand the root causes of excessive alarming.
- Targeted Interventions: Facilitates the development of strategies to reduce unnecessary alarms.

Continuous Improvement

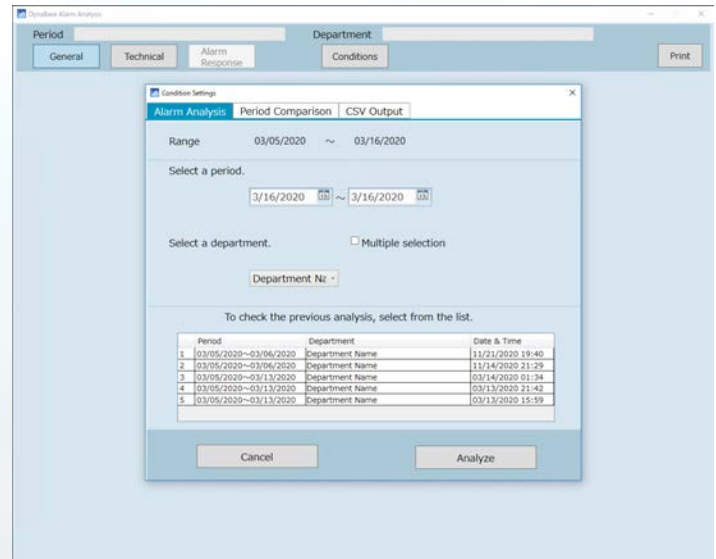
- Historical Benchmarking: Measures the effectiveness of alarm reduction initiatives over time.
- Best Practices Establishment: Helps in the establishment of best practices for alarm management.

Reduction of Nuisance Alarms

- Identification and Elimination: Assists in identifying and eliminating nuisance alarms.
- Focus of Patient Care: Reduces distractions for clinicians, allowing them to focus more on patient care.

Enhanced Patient Safety

- Detailed Data Analysis: Provides granular insights into alarm data at the unit, floor, bed, or patient level.
- Appropriate and Actionable Alarms: Ensures that alarms are clinically relevant and actionable.



Basic Screen

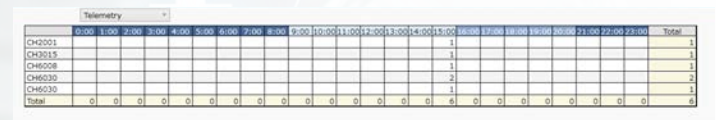


Name	Alarms	Suspended	Continued	Ratio	Response time by category
Tab Far	304	122	177	40.1%	31 31 41 41
NSBP	225	88	137	39.1%	17 11 17 20 30
Arytyle	865	260	605	30.1%	110 53 62 33 4
VF	958	114	824	12.0%	80 42 25 11 0
MultiForm	9	3	6	33.3%	0 0 0 0 0
VF	61	6	55	9.8%	0 0 0 0 0
APNEA	2429	232	2197	9.6%	130 42 31 23 4
SpO2 VT	460	49	420	9.7%	32 0 0 0 0
SVPC	178	14	164	7.9%	11 3 0 0 0
VFC	12	1	11	7.7%	0 0 0 0 0
Run	4823	338	4485	7.0%	232 78 25 0 0
Lead OFF	2524	168	2356	6.7%	39 30 37 19 3
Ext Brady	73	4	69	5.5%	2 0 2 0 0
ECG2	1761	82	1679	4.7%	78 12 16 11 2
SpO2 Sensor	9613	277	9336	3.0%	184 62 89 31 11
SpO2	23291	282	23009	3.4%	460 138 135 43 8
PR	18748	490	18258	2.6%	202 68 42 39 2
RESP	8863	173	8690	2.0%	110 18 30 19 2
Brady	16435	368	16067	1.9%	122 53 30 22 4
Check CO2	37804	580	37224	1.5%	491 80 56 29 2
HR	85	3	82	3.5%	0 0 0 0 0
Tachy	19575	257	19318	1.3%	202 42 16 0 0
IBP	3826	46	3780	1.2%	32 0 0 0 0
Coastal	10	0	10	0.0%	0 0 0 0 0
IL on T	10	0	10	0.0%	0 0 0 0 0
Triple	7	0	7	0.0%	0 0 0 0 0
Ext Tachy	4	0	4	0.0%	0 0 0 0 0
Frequent	5	0	5	0.0%	0 0 0 0 0
Resonated RR	4	0	4	0.0%	0 0 0 0 0

Alarm Response Timing



Alarm Responsiveness



Technical Alarms - Bedside

